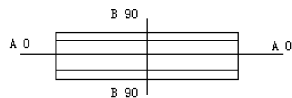
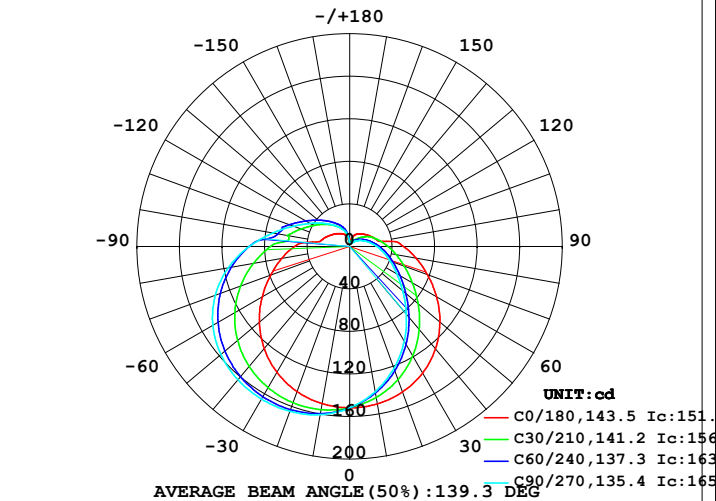


LUMINAIRE PHOTOMETRIC TEST REPORT

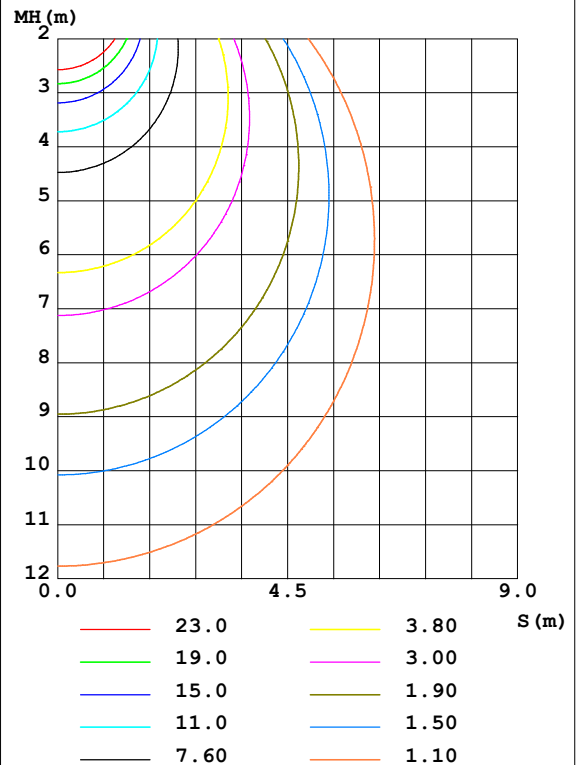
Test:U:48.00V I:0.1950A P:9.360W PF:1.000 Freq:50.00Hz Lamp Flux:807.518x1 lm		
NAME: M20-T43001A-9G40-120D	TYPE:	WEIGHT:
SPEC.:	DIM.:	SERIAL No.:
MFR.:	SUR.:100*116.4	Shielding Angle:

DATA OF LAMP		PHOTOMETRIC DATA Eff: 86.27 lm/W			
MODEL	4000K CRI90	I _{max} (cd)	165.9	S/MH(C0/180)	1.34
NOMINAL POWER(W)	9	LOR(%)	100.0	S/MH(C90/270)	1.64
RATED VOLTAGE(V)	226	TOTAL FLUX(lm)	807.52	η UP,DN(C0-180)	6.5,28.4
NOMINAL FLUX(lm)	807.518	CIE CLASS	SEMI-D.	η UP,DN(C180-360)	15.9,49.1
LAMPS INSIDE	1	η up(%)	22.5	CIBSE SHR NOM	1.50
TEST VOLTAGE(V)	225.1	η down(%)	77.5	CIBSE SHR MAX	1.55

LUMINOUS INTENSITY DISTRIBUTION DIAGRAM



C0 PLANE ISOLUX DIAGRAM (UNIT:lx)



C Range: 0 - 360DEG
 C Interval: 15.0DEG
 Test Speed: HIGH
 Temperature:25.3DEG
 Operators:ZR
 Test Date:2021-08-18

γ Range: 0 - 180DEG
 γ Interval: 1.0DEG
 Test System:EVERFINE GO-2000B_V1 SYSTEM V2.0.354
 Humidity:65.0%
 Test Distance:8.402m [K=1.0000]
 Remarks:

ZONAL FLUX DIAGRAM

ZONAL FLUX DIAGRAM:

γ	C0	C45	C90	C135	C180	C225	C270	C315	γ	Φ zone	Φ total	%lum, lamp
10	150.3	141.8	138.7	142.2	150.1	158.0	160.6	157.6	0- 10	14.40	14.40	1.78,1.78
20	145.6	128.3	122.0	129.3	145.2	160.3	165.0	159.9	10- 20	41.73	56.13	6.95,6.95
30	137.4	111.7	102.9	113.3	136.8	159.1	165.7	158.8	20- 30	64.85	121.0	15,15
40	125.6	93.26	83.00	95.40	125.2	154.6	163.6	153.9	30- 40	81.67	202.6	25.1,25.1
50	110.8	75.29	65.23	77.30	111.0	146.6	158.1	145.1	40- 50	91.13	293.8	36.4,36.4
60	94.26	60.02	51.24	61.49	95.13	135.4	148.6	132.6	50- 60	93.41	387.2	47.9,47.9
70	77.89	48.15	40.66	49.09	79.24	121.0	134.5	116.8	60- 70	89.54	476.7	59,59
80	63.40	38.90	32.42	39.57	64.92	103.9	116.0	98.78	70- 80	80.78	557.5	69,69
90	50.76	31.52	25.71	31.95	52.01	85.56	94.45	80.28	80- 90	68.71	626.2	77.5,77.5
100	28.70	25.43	20.09	25.74	28.21	63.33	73.47	63.91	90-100	54.01	680.2	84.2,84.2
110	24.19	20.39	15.39	20.60	24.72	54.75	56.22	50.99	100-110	41.20	721.4	89.3,89.3
120	20.81	16.22	11.51	16.33	21.30	44.15	43.53	41.06	110-120	30.82	752.2	93.2,93.2
130	17.98	12.39	8.423	12.66	18.36	35.83	34.29	33.28	120-130	21.96	774.2	95.9,95.9
140	15.62	8.707	6.053	9.059	15.92	29.13	27.04	26.95	130-140	14.98	789.2	97.7,97.7
150	13.57	5.790	4.491	6.059	13.89	23.54	21.17	21.59	140-150	9.658	798.8	98.9,98.9
160	10.78	4.607	3.598	4.157	11.20	18.45	16.37	16.76	150-160	5.662	804.5	99.6,99.6
170	5.805	3.181	3.129	3.332	5.667	10.75	11.05	10.59	160-170	2.556	807.0	99.9,99.9
180	2.962	3.055	3.049	3.038	2.962	3.049	3.044	3.049	170-180	0.4679	807.5	100,100
DEG	LUMINOUS INTENSITY:cd									UNIT:lm		

Conical surface Flux(90deg): 247.49 lm

%lum = 30.6%

%lamp = 30.6%

Conical surface Flux(120deg): 387.18 lm

%lum = 47.9%

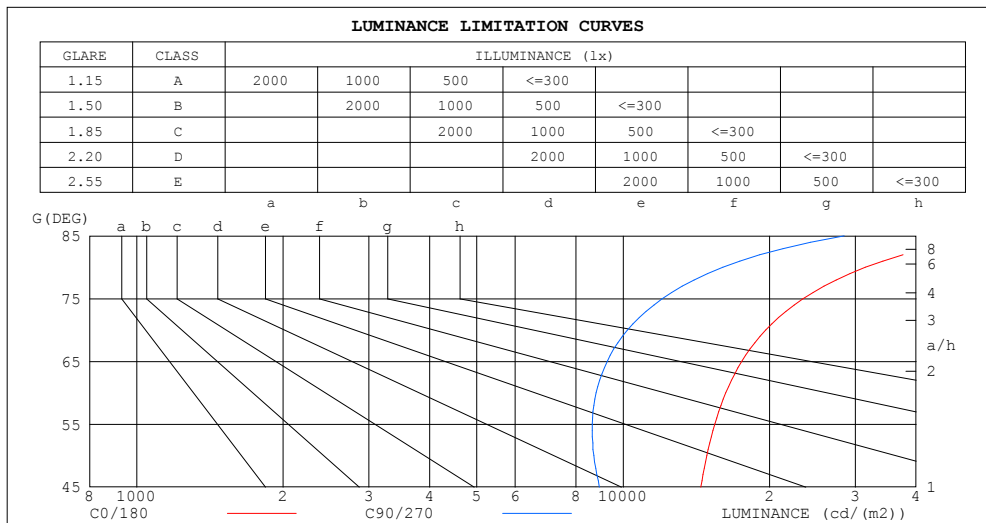
%lamp = 47.9%

C Range: 0 - 360DEG
 C Interval: 15.0DEG
 Test Speed: HIGH
 Temperature:25.3DEG
 Operators:ZR
 Test Date:2021-08-18

γ Range: 0 - 180DEG
 γ Interval: 1.0DEG
 Test System:EVERFINE GO-2000B_V1 SYSTEM V2.0.354
 Humidity:65.0%
 Test Distance:8.402m [K=1.0000]
 Remarks:

LUMINANCE LIMITATION CURVES

Test:U:48.00V I:0.1950A P:9.360W PF:1.000 Freq:50.00Hz Lamp Flux:807.518x1 lm		
NAME: M20-T43001A-9G40-120D	TYPE:	WEIGHT:
SPEC.:	DIM.:	SERIAL No.:
MFR.:	SUR.:100*116.4	Shielding Angle:



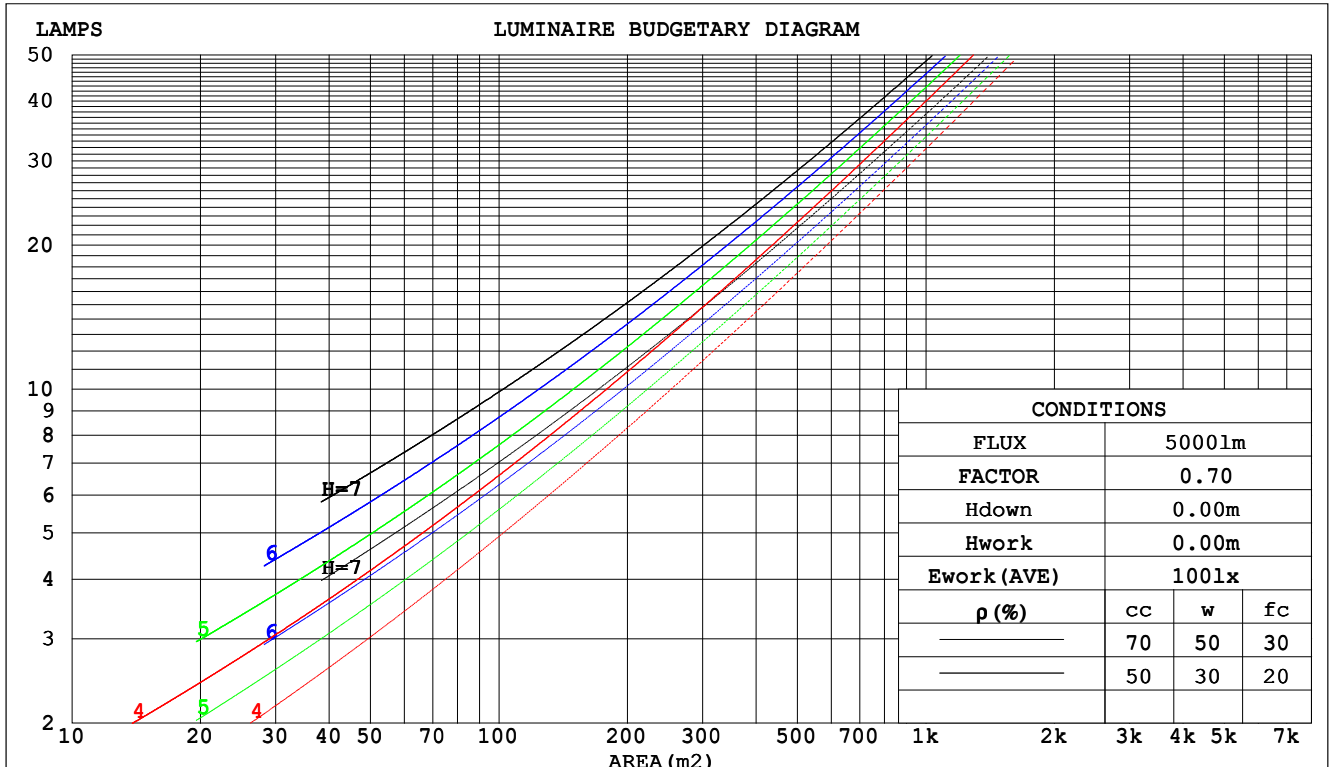
C Range: 0 - 360DEG
C Interval: 15.0DEG
Test Speed: HIGH
Temperature:25.3DEG
Operators:ZR
Test Date:2021-08-18

γ Range: 0 - 180DEG
 γ Interval: 1.0DEG
Test System:EVERFINE GO-2000B_V1 SYSTEM V2.0.354
Humidity:65.0%
Test Distance:8.402m [K=1.0000]
Remarks:

CU AND LUMINAIRE BUDGETARY ESTIMATE DIAGRAM

Test:U:48.00V I:0.1950A P:9.360W PF:1.000 Freq:50.00Hz Lamp Flux:807.518x1 lm		
NAME: M20-T43001A-9G40-120D	TYPE:	WEIGHT:
SPEC.:	DIM.:	SERIAL No.:
MFR.:	SUR.:100*116.4	Shielding Angle:

pcc	80%			70%			50%			30%			10%			0
pw	50%	30%	10%	50%	30%	10%	50%	30%	10%	50%	30%	10%	50%	30%	10%	0
pfc	20%			20%			20%			20%			20%			0
RCR	RCR:Room Cavity Ratio						Coefficients of Utilization(CU)									
0.0	1.14	1.14	1.14	1.08	1.08	1.08	.99	.99	.99	.90	.90	.90	.81	.81	.81	.78
1.0	.94	.88	.83	.89	.84	.80	.81	.77	.73	.73	.70	.67	.66	.63	.61	.57
2.0	.80	.72	.65	.76	.69	.63	.69	.63	.58	.62	.57	.53	.56	.52	.49	.45
3.0	.69	.60	.53	.66	.57	.51	.59	.53	.47	.54	.48	.43	.48	.44	.40	.36
4.0	.61	.51	.44	.58	.49	.42	.52	.45	.39	.47	.41	.36	.43	.37	.33	.30
5.0	.54	.44	.37	.51	.42	.36	.46	.39	.33	.42	.36	.31	.38	.33	.28	.26
6.0	.48	.39	.32	.46	.37	.31	.42	.34	.29	.38	.32	.27	.34	.29	.25	.22
7.0	.43	.34	.28	.41	.33	.27	.38	.30	.25	.34	.28	.23	.31	.26	.22	.19
8.0	.39	.30	.24	.38	.29	.24	.34	.27	.22	.31	.25	.21	.29	.23	.19	.17
9.0	.36	.27	.22	.34	.26	.21	.31	.25	.20	.29	.23	.19	.26	.21	.17	.15
10.0	.33	.25	.19	.32	.24	.19	.29	.22	.18	.27	.21	.17	.24	.19	.16	.14



C Range: 0 - 360DEG
 C Interval: 15.0DEG
 Test Speed: HIGH
 Temperature:25.3DEG
 Operators:ZR
 Test Date:2021-08-18

γ Range: 0 - 180DEG
 γ Interval: 1.0DEG
 Test System:EVERFINE GO-2000B_V1 SYSTEM V2.0.354
 Humidity:65.0%
 Test Distance:8.402m [K=1.0000]
 Remarks:

WEC AND CCEC

Test:U:48.00V I:0.1950A P:9.360W PF:1.000 Freq:50.00Hz Lamp Flux:807.518x1 lm					
NAME: M20-T43001A-9G40-120D			TYPE:		WEIGHT:
SPEC.:			DIM.:		SERIAL No.:
MFR.:			SUR.:100*116.4		Shielding Angle:

pcc	80%			70%			50%			30%			10%			0
pw	50%	30%	10%	50%	30%	10%	50%	30%	10%	50%	30%	10%	50%	30%	10%	0
pfc	20%			20%			20%			20%			20%			0
RCR	RCR:Room Cavity Ratio						Wall Exitance Coefficients(WEC)									
0.0																
1.0	.400	.227	.072	.385	.220	.070	.359	.206	.066	.335	.193	.062	.312	.181	.058	
2.0	.341	.187	.057	.328	.181	.056	.305	.169	.053	.282	.158	.050	.262	.148	.047	
3.0	.301	.160	.048	.289	.155	.047	.268	.145	.044	.248	.136	.042	.229	.127	.039	
4.0	.270	.140	.041	.259	.136	.040	.239	.127	.038	.221	.119	.036	.204	.111	.034	
5.0	.244	.125	.036	.235	.121	.035	.217	.113	.033	.200	.106	.031	.184	.099	.030	
6.0	.223	.112	.032	.215	.108	.031	.198	.102	.030	.183	.095	.028	.169	.089	.026	
7.0	.206	.102	.029	.198	.098	.028	.183	.092	.027	.169	.086	.025	.155	.081	.024	
8.0	.190	.093	.026	.183	.090	.025	.169	.085	.024	.156	.079	.023	.144	.074	.022	
9.0	.177	.086	.024	.171	.083	.023	.158	.078	.022	.146	.073	.021	.134	.068	.020	
10.0	.166	.079	.022	.160	.077	.021	.148	.072	.020	.137	.068	.019	.126	.063	.018	

pcc	80%			70%			50%			30%			10%			0
pw	50%	30%	10%	50%	30%	10%	50%	30%	10%	50%	30%	10%	50%	30%	10%	0
pfc	20%			20%			20%			20%			20%			0
RCR	RCR:Room Cavity Ratio						Ceiling Cavity Exitance Coefficients(CCEC)									
0.0	.362	.362	.362	.309	.309	.309	.211	.211	.211	.121	.121	.121	.039	.039	.039	
1.0	.359	.328	.300	.307	.281	.258	.210	.194	.178	.121	.112	.104	.039	.036	.034	
2.0	.352	.305	.266	.302	.263	.230	.207	.182	.160	.119	.106	.094	.038	.034	.031	
3.0	.345	.289	.244	.296	.249	.212	.203	.173	.149	.117	.101	.088	.038	.033	.029	
4.0	.337	.277	.231	.289	.239	.200	.199	.167	.141	.115	.098	.083	.037	.032	.027	
5.0	.330	.267	.221	.283	.231	.192	.195	.161	.136	.113	.095	.081	.036	.031	.027	
6.0	.322	.259	.214	.277	.225	.187	.191	.157	.132	.111	.092	.078	.036	.030	.026	
7.0	.315	.253	.209	.271	.219	.182	.187	.154	.129	.109	.090	.077	.035	.030	.025	
8.0	.308	.247	.205	.265	.214	.179	.184	.151	.127	.107	.089	.076	.035	.029	.025	
9.0	.302	.242	.202	.260	.210	.177	.180	.148	.125	.105	.087	.075	.034	.029	.025	
10.0	.296	.238	.200	.255	.207	.175	.177	.146	.124	.103	.086	.074	.033	.028	.025	

C Range: 0 - 360DEG
C Interval: 15.0DEG
Test Speed: HIGH
Temperature:25.3DEG
Operators:ZR
Test Date:2021-08-18

γ Range: 0 - 180DEG
γ Interval: 1.0DEG
Test System:EVERFINE GO-2000B_V1 SYSTEM V2.0.354
Humidity:65.0%
Test Distance:8.402m [K=1.0000]
Remarks:

UGR(Unified Glare Rating) Table

Test:U:48.00V I:0.1950A P:9.360W PF:1.000 Freq:50.00Hz Lamp Flux:807.518x1 lm											
NAME: M20-T43001A-9G40-120D						TYPE:		WEIGHT:			
SPEC.:						DIM.:		SERIAL No.:			
MFR.:						SUR.:100*116.4		Shielding Angle:			
ceiling/cavity	0.7	0.7	0.5	0.5	0.3	0.7	0.7	0.5	0.5	0.3	
walls	0.5	0.3	0.5	0.3	0.3	0.5	0.3	0.5	0.3	0.3	
working plane	0.2	0.2	0.2	0.2	0.2	0.2	0.2	0.2	0.2	0.2	
Room dimensions		Viewed crosswise					Viewed endwise				
x = 2H y = 2H	20.4	21.8	21.0	22.4	23.0	17.9	19.3	18.5	19.8	20.5	
	3H	23.0	24.2	23.6	24.8	25.5	19.9	21.2	20.5	21.8	22.5
	4H	24.4	25.6	25.0	26.2	26.9	21.1	22.2	21.7	22.9	23.6
	6H	26.0	27.1	26.6	27.7	28.5	22.4	23.5	23.0	24.1	24.8
	8H	26.9	27.9	27.5	28.6	29.3	23.1	24.2	23.7	24.8	25.6
	12H	27.9	28.9	28.6	29.6	30.4	23.9	25.0	24.6	25.6	26.4
4H	2H	20.7	21.9	21.4	22.5	23.3	18.8	20.0	19.5	20.6	21.3
	3H	23.5	24.5	24.1	25.2	25.9	21.0	22.1	21.7	22.7	23.5
	4H	25.1	26.0	25.7	26.7	27.5	22.3	23.3	23.0	23.9	24.7
	6H	26.9	27.7	27.6	28.4	29.3	23.8	24.6	24.5	25.3	26.1
	8H	27.9	28.7	28.6	29.4	30.3	24.6	25.4	25.3	26.1	26.9
	12H	29.1	29.9	29.9	30.6	31.5	25.5	26.3	26.3	27.0	27.9
8H	4H	25.3	26.1	26.0	26.8	27.7	23.0	23.8	23.7	24.5	25.4
	6H	27.4	28.0	28.1	28.8	29.7	24.7	25.4	25.5	26.2	27.0
	8H	28.6	29.2	29.3	30.0	30.9	25.7	26.3	26.5	27.1	28.0
	12H	30.0	30.6	30.8	31.4	32.3	26.9	27.4	27.7	28.2	29.1
12H	4H	25.3	26.1	26.1	26.8	27.7	23.3	24.0	24.0	24.7	25.6
	6H	27.5	28.1	28.2	28.8	29.7	25.1	25.7	25.8	26.5	27.4
	8H	28.8	29.3	29.6	30.1	31.0	26.2	26.7	27.0	27.5	28.4
Variations with the observer position at spacings:											
S = 1.0H	+ 0.1 / - 0.1					+ 0.1 / - 0.1					
1.5H	+ 0.2 / - 0.2					+ 0.2 / - 0.3					
2.0H	+ 0.3 / - 0.4					+ 0.2 / - 0.3					

CIE Pub.117, 807.5 lm Total Lamp Luminous Flux Correct (8log(F/F0) = -0.7)

C Range: 0 - 360DEG
C Interval: 15.0DEG
Test Speed: HIGH
Temperature:25.3DEG
Operators:ZR
Test Date:2021-08-18

γ Range: 0 - 180DEG
γ Interval: 1.0DEG
Test System:EVERFINE GO-2000B_V1 SYSTEM V2.0.354
Humidity:65.0%
Test Distance:8.402m [K=1.0000]
Remarks:

UTILIZATION FACTORS TABLE

Test:U:48.00V I:0.1950A P:9.360W PF:1.000 Freq:50.00Hz Lamp Flux:807.518x1 lm		
NAME: M20-T43001A-9G40-120D	TYPE:	WEIGHT:
SPEC.:	DIM.:	SERIAL No.:
MFR.:	SUR.:100*116.4	Shielding Angle:

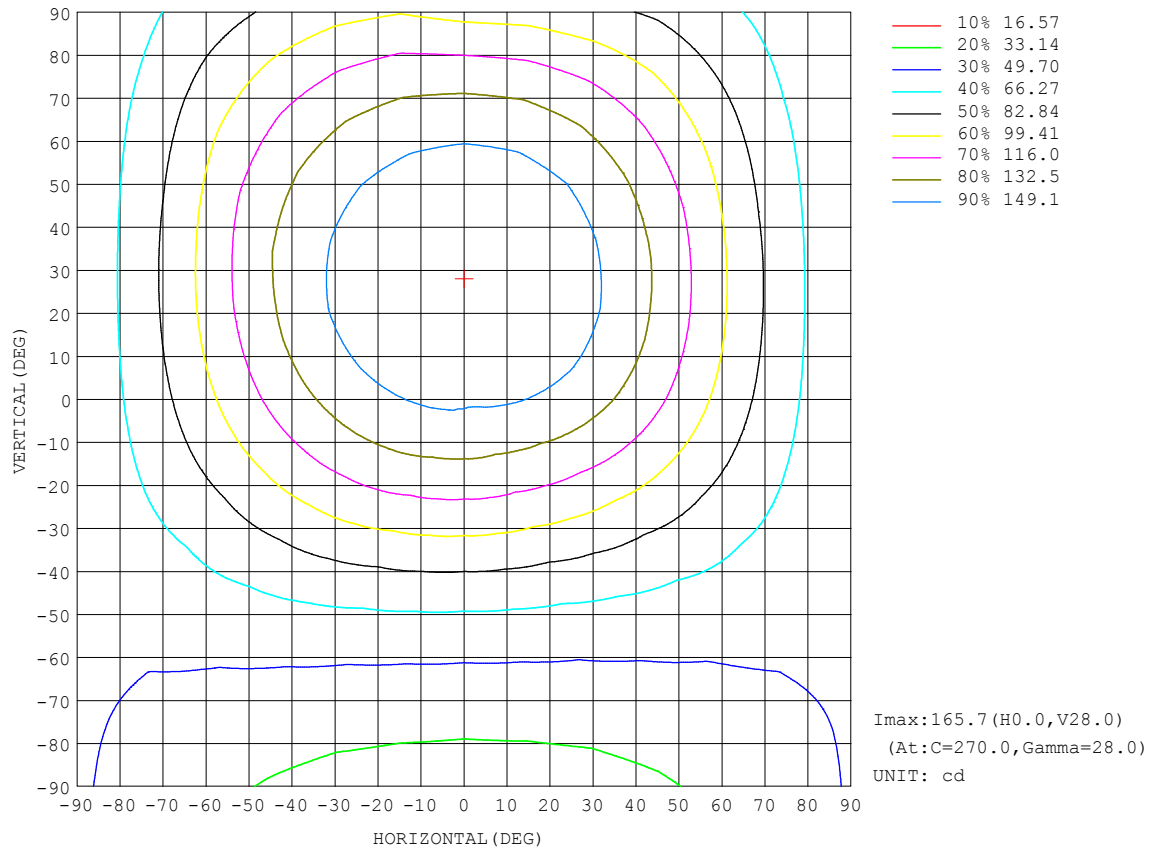
REFLECTANCE										
Ceiling	0.8	0.8	0.8	0.7	0.7	0.7	0.5	0.5	0.5	0
Walls	0.7	0.5	0.3	0.7	0.5	0.3	0.7	0.5	0.3	0
Working plane	0.2	0.2	0.2	0.2	0.2	0.2	0.2	0.2	0.2	0
ROOM INDEX	UTILIZATION FACTORS (PERCENT) $k(RI) \times RCR = 5$									
$k = 0.60$	46	33	26	44	33	25	42	31	25	18
0.80	55	41	33	53	40	33	50	39	32	24
1.00	62	49	40	60	48	40	56	48	38	29
1.25	69	56	47	66	54	46	62	52	44	34
1.50	74	61	53	71	60	51	66	56	49	38
2.00	82	70	61	78	68	60	72	63	56	44
2.50	86	75	67	82	73	65	76	68	61	48
3.00	90	80	72	86	77	70	79	72	66	51
4.00	95	86	79	91	83	77	83	77	71	56
5.00	98	91	84	93	87	81	85	80	75	59
ROOM INDEX	UF (total)									Direct
According to DIN EN 13032-2 2004			Suspended					SHRNOM = 1.25		

C Range: 0 - 360DEG
C Interval: 15.0DEG
Test Speed: HIGH
Temperature:25.3DEG
Operators:ZR
Test Date:2021-08-18

γ Range: 0 - 180DEG
 γ Interval: 1.0DEG
Test System:EVERFINE GO-2000B_V1 SYSTEM V2.0.354
Humidity:65.0%
Test Distance:8.402m [K=1.0000]
Remarks:

ISOCANDELA DIAGRAM

Test:U:48.00V I:0.1950A P:9.360W PF:1.000 Freq:50.00Hz Lamp Flux:807.518x1 lm		
NAME: M20-T43001A-9G40-120D	TYPE:	WEIGHT:
SPEC.:	DIM.:	SERIAL No.:
MFR.:	SUR.:100*116.4	Shielding Angle:

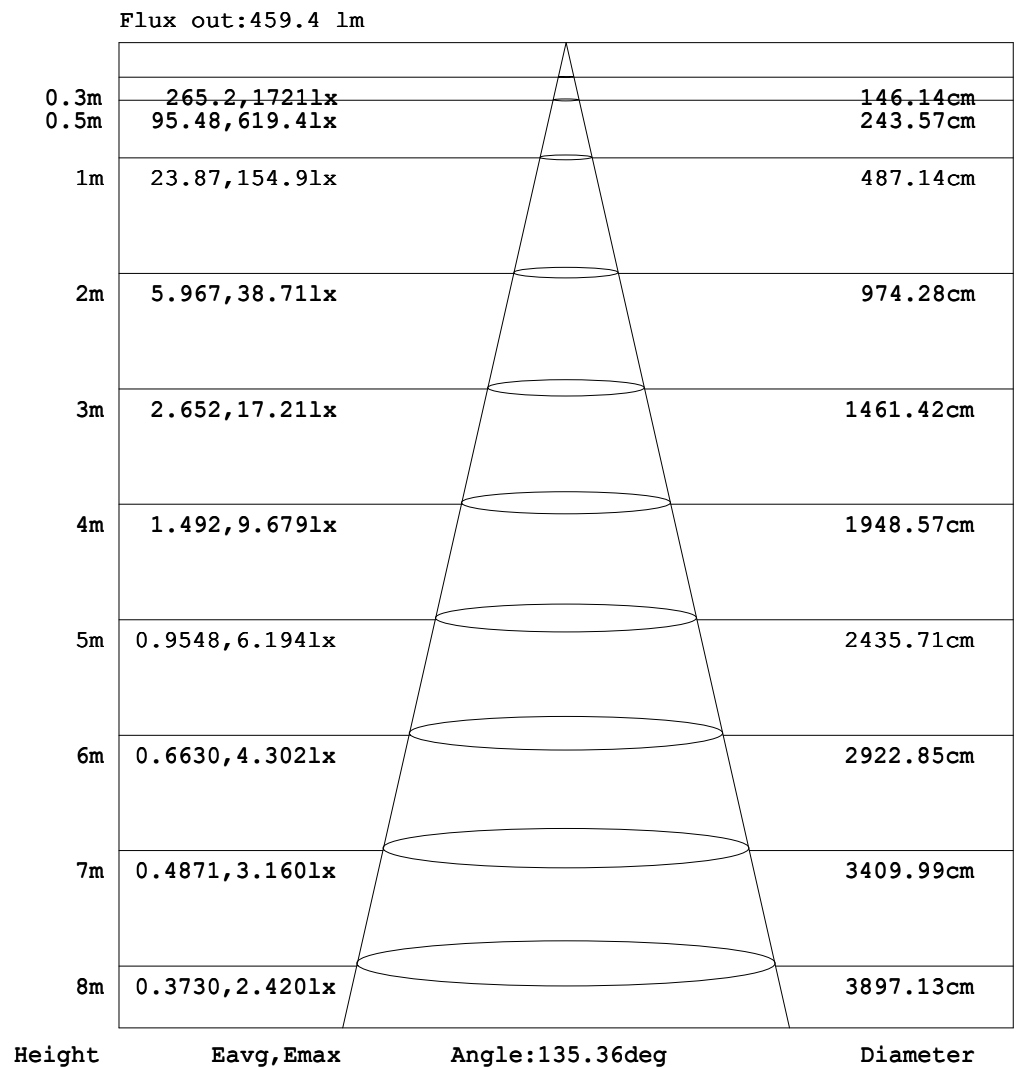


C Range: 0 - 360DEG
C Interval: 15.0DEG
Test Speed: HIGH
Temperature:25.3DEG
Operators:ZR
Test Date:2021-08-18

γ Range: 0 - 180DEG
γ Interval: 1.0DEG
Test System:EVERFINE GO-2000B_V1 SYSTEM V2.0.354
Humidity:65.0%
Test Distance:8.402m [K=1.0000]
Remarks:

AAI Figure

Test:U:48.00V I:0.1950A P:9.360W PF:1.000 Freq:50.00Hz Lamp Flux:807.518x1 lm		
NAME: M20-T43001A-9G40-120D	TYPE:	WEIGHT:
SPEC.:	DIM.:	SERIAL No.:
MFR.:	SUR.:100*116.4	Shielding Angle:



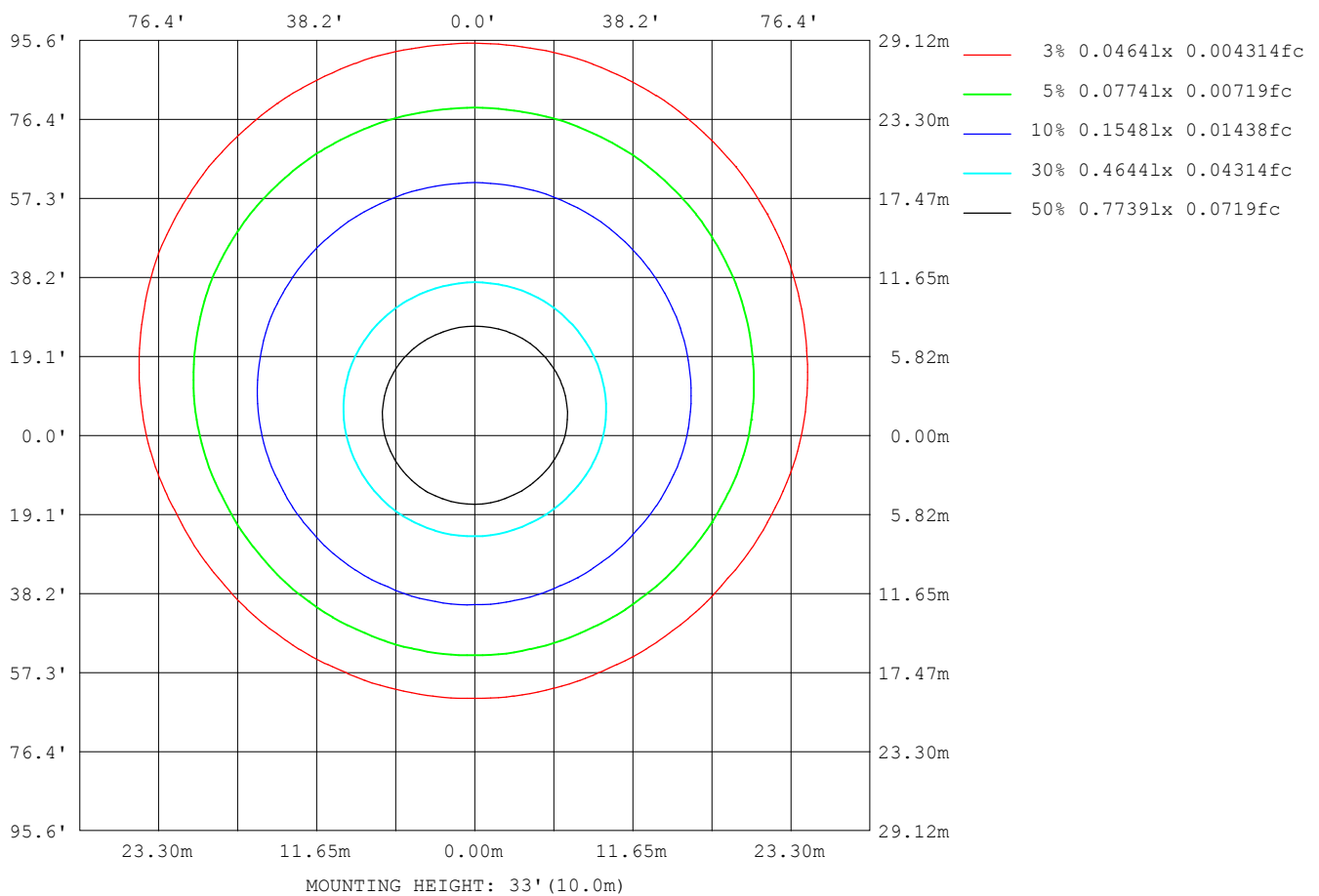
Note:The Curves indicate the illuminated area and the average illumination when the luminaire is at different distance.

C Range: 0 - 360DEG
C Interval: 15.0DEG
Test Speed: HIGH
Temperature:25.3DEG
Operators:ZR
Test Date:2021-08-18

γ Range: 0 - 180DEG
γ Interval: 1.0DEG
Test System:EVERFINE GO-2000B_V1 SYSTEM V2.0.354
Humidity:65.0%
Test Distance:8.402m [K=1.0000]
Remarks:

ISOLUX DIAGRAM

Test:U:48.00V I:0.1950A P:9.360W PF:1.000 Freq:50.00Hz Lamp Flux:807.518x1 lm		
NAME: M20-T43001A-9G40-120D	TYPE:	WEIGHT:
SPEC.:	DIM.:	SERIAL No.:
MFR.:	SUR.:100*116.4	Shielding Angle:



C Range: 0 - 360DEG
C Interval: 15.0DEG
Test Speed: HIGH
Temperature:25.3DEG
Operators:ZR
Test Date:2021-08-18

γ Range: 0 - 180DEG
γ Interval: 1.0DEG
Test System:EVERFINE GO-2000B_V1 SYSTEM V2.0.354
Humidity:65.0%
Test Distance:8.402m [K=1.0000]
Remarks:

LED Avg.L Report

Test:U:48.00V I:0.1950A P:9.360W PF:1.000 Freq:50.00Hz Lamp Flux:807.518x1 lm		
NAME: M20-T43001A-9G40-120D	TYPE:	WEIGHT:
SPEC.:	DIM.:	SERIAL No.:
MFR.:	SUR.:100*116.4	Shielding Angle:

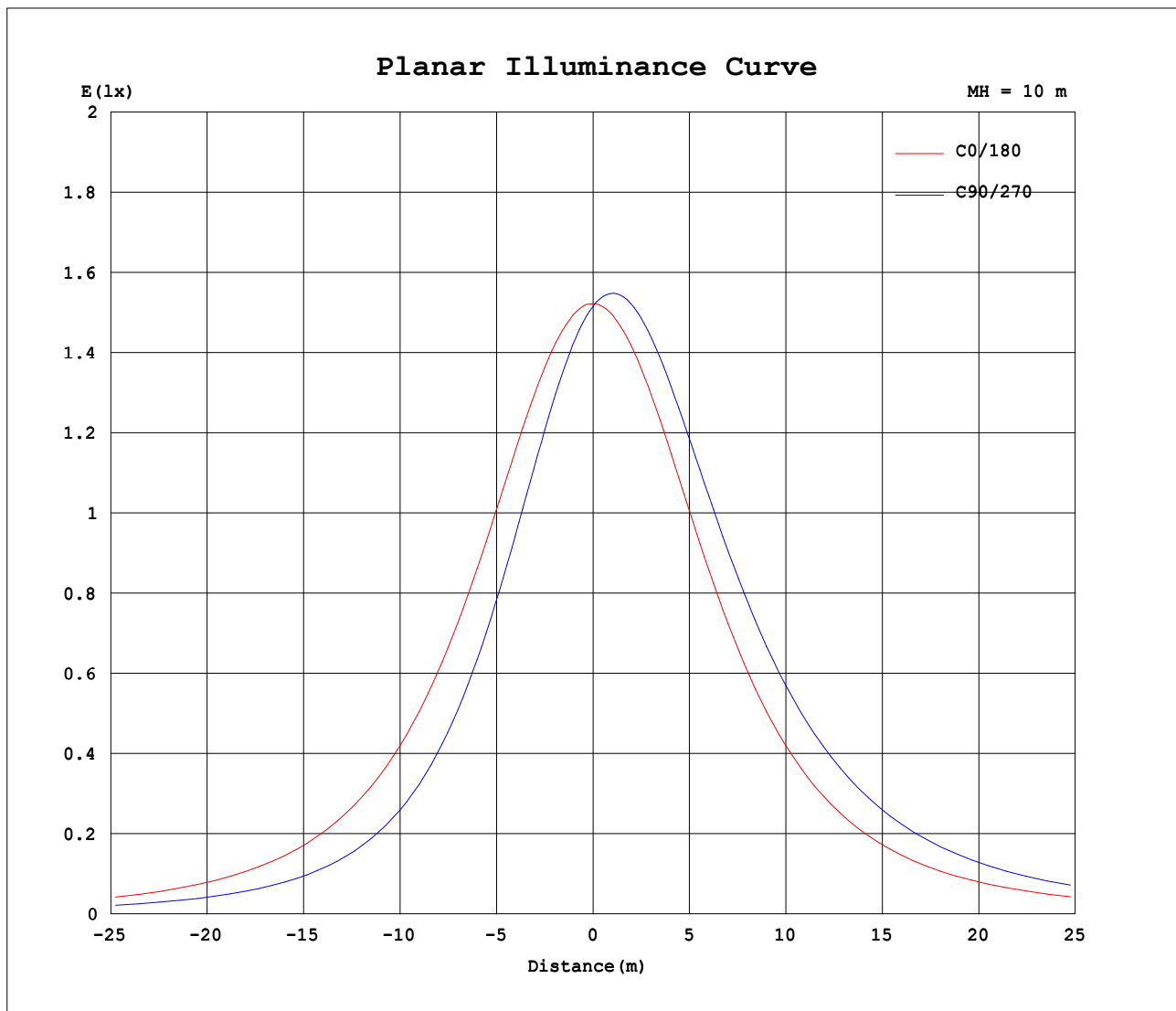
AvgL	cd/m2
L_0~180 (65) av	17588
L_0~180 (75) av	23610
L_0~180 (85) av	56770
L_90~270 (65) av	19085
L_90~270 (75) av	26898
L_90~270 (85) av	66166
L_45 (65) av	18412
L_45 (75) av	25561
L_45 (85) av	62783

Standard: GB/T 29293-2012

C Range: 0 - 360DEG
 C Interval: 15.0DEG
 Test Speed: HIGH
 Temperature:25.3DEG
 Operators:ZR
 Test Date:2021-08-18

γ Range: 0 - 180DEG
 γ Interval: 1.0DEG
 Test System:EVERFINE GO-2000B_V1 SYSTEM V2.0.354
 Humidity:65.0%
 Test Distance:8.402m [K=1.0000]
 Remarks:

Planar Illuminance Curve



C Range: 0 - 360DEG
C Interval: 15.0DEG
Test Speed: HIGH
Temperature: 25.3DEG
Operators: ZR
Test Date: 2021-08-18

γ Range: 0 - 180DEG
 γ Interval: 1.0DEG
Test System: EVERFINE GO-2000B_V1 SYSTEM V2.0.354
Humidity: 65.0%
Test Distance: 8.402m [K=1.0000]
Remarks:

LUMINOUS DISTRIBUTION INTENSITY DATA

Test:U:48.00V I:0.1950A P:9.360W PF:1.000 Freq:50.00Hz Lamp Flux:807.518x1 lm		
NAME: M20-T43001A-9G40-120D	TYPE:	WEIGHT:
SPEC.:	DIM.:	SERIAL No.:
MFR.:	SUR.:100*116.4	Shielding Angle:

Table--1

UNIT: cd

C (DEG) γ (DEG)	0	15	30	45	60	75	90	105	120	135	150	165	180	195	210	225	240	255	270
0	152	152	152	152	152	152	152	152	152	152	152	152	152	152	152	152	152	152	152
5	151	150	148	147	146	146	146	146	147	147	149	150	151	153	154	155	156	157	157
10	150	147	144	142	140	139	139	139	140	142	145	147	150	153	156	158	160	160	161
15	148	144	139	135	133	131	131	131	133	136	140	144	148	153	157	160	162	163	163
20	146	139	133	128	124	123	122	123	125	129	134	139	145	151	156	160	163	165	165
25	142	134	126	120	116	114	113	114	117	122	127	134	141	149	155	160	164	165	166
30	137	128	119	112	106	104	103	104	108	113	120	128	137	146	153	159	163	165	166
35	132	121	110	103	96.5	93.8	92.9	94.7	98.2	105	112	121	131	142	151	157	162	164	165
40	126	114	102	93.3	86.9	83.9	83.0	84.8	88.6	95.4	104	114	125	137	147	155	160	162	164
45	119	105	93.0	84.0	77.6	74.5	73.6	75.4	79.3	86.2	94.8	106	118	131	143	151	157	160	161
50	111	96.9	84.2	75.3	69.0	66.0	65.2	66.8	70.5	77.3	86.0	97.3	111	125	138	147	153	157	158
55	103	88.3	75.8	67.3	61.4	58.6	57.7	59.2	62.6	69.0	77.4	88.8	103	118	132	141	149	152	154
60	94.3	79.9	68.0	60.0	54.6	52.0	51.2	52.5	55.7	61.5	69.4	80.3	95.1	110	125	135	143	147	149
65	86.0	72.0	61.0	53.7	48.8	46.4	45.7	46.8	49.7	54.9	62.1	72.4	87.1	102	117	129	137	141	142
70	77.9	64.7	54.7	48.2	43.6	41.4	40.7	41.8	44.3	49.1	55.6	64.9	79.2	93.7	109	121	129	134	134
75	70.4	58.2	49.2	43.3	39.1	37.0	36.3	37.3	39.7	44.0	49.9	58.2	71.9	85.2	101	113	122	126	126
80	63.4	52.4	44.4	38.9	35.0	33.1	32.4	33.4	35.6	39.6	44.9	52.3	64.9	77.1	91.8	104	113	117	116
85	56.9	47.3	40.1	35.0	31.4	29.5	28.9	29.8	31.8	35.6	40.4	47.1	58.3	69.4	82.9	94.7	104	108	105
90	50.8	42.8	36.2	31.5	28.1	26.3	25.7	26.5	28.5	32.0	36.5	42.4	52.0	62.3	74.5	85.6	94.4	98.7	94.5
95	45.5	38.8	32.7	28.3	25.1	23.3	22.8	23.5	25.5	28.7	32.9	38.3	43.9	49.9	59.2	70.4	79.6	80.4	83.6
100	28.7	35.2	29.6	25.4	22.3	20.6	20.1	20.8	22.7	25.7	29.7	33.9	28.2	50.7	59.8	63.3	68.8	71.4	73.5
105	26.1	31.1	26.7	22.8	19.8	18.1	17.6	18.3	20.1	23.1	26.8	29.4	26.6	45.9	53.8	61.2	65.4	65.3	64.3
110	24.2	25.7	24.1	20.4	17.5	15.9	15.4	16.1	17.8	20.6	24.1	25.2	24.7	41.6	48.6	54.7	60.4	60.1	56.2
115	22.4	20.7	21.6	18.2	15.4	13.9	13.4	14.0	15.7	18.4	21.7	21.4	23.0	37.8	43.9	49.1	53.8	56.0	49.3
120	20.8	16.5	18.8	16.2	13.6	12.0	11.5	12.2	13.8	16.3	19.2	17.9	21.3	33.9	39.7	44.1	48.1	49.9	43.5
125	19.3	13.6	15.8	14.3	11.9	10.4	9.88	10.5	12.1	14.5	16.4	14.5	19.8	30.2	35.9	39.8	43.1	44.4	38.6
130	18.0	12.5	13.1	12.4	10.4	8.91	8.42	8.96	10.5	12.7	13.8	11.8	18.4	26.9	32.5	35.8	38.6	39.8	34.3
135	16.7	11.7	10.7	10.5	9.02	7.64	7.10	7.66	9.12	10.8	11.4	10.7	17.1	24.1	29.5	32.3	34.7	35.6	30.5
140	15.6	11.2	8.63	8.71	7.68	6.54	6.05	6.56	7.79	9.06	9.26	9.93	15.9	21.7	26.6	29.1	31.1	31.8	27.0
145	14.6	10.9	7.93	7.13	6.43	5.53	5.19	5.57	6.54	7.45	7.46	9.40	14.9	19.6	23.9	26.2	27.9	28.5	24.0
150	13.6	10.3	7.60	5.79	5.37	4.70	4.49	4.75	5.45	6.06	6.43	8.88	13.9	17.8	21.4	23.5	25.0	25.4	21.2
155	12.2	9.69	7.19	5.13	4.53	4.08	3.94	4.10	4.58	4.97	6.04	8.20	12.8	16.0	19.1	21.0	22.3	22.6	18.7
160	10.8	8.65	6.42	4.61	3.90	3.67	3.60	3.65	3.95	4.16	5.56	7.33	11.2	13.9	16.7	18.5	19.7	20.0	16.4
165	8.60	6.60	4.79	3.56	3.50	3.40	3.32	3.33	3.51	3.70	4.91	6.25	8.58	10.8	13.3	15.0	16.5	17.1	14.1
170	5.80	4.45	3.36	3.18	3.24	3.10	3.13	3.15	3.23	3.33	4.05	4.93	5.67	7.31	9.18	10.7	12.3	13.2	11.0
175	3.37	3.00	3.06	3.04	3.06	3.10	3.05	3.04	3.09	3.09	3.11	3.07	3.19	3.88	4.70	5.27	5.67	5.29	4.25
180	2.96	2.98	3.02	3.05	3.05	3.11	3.05	3.04	3.02	3.04	3.04	3.02	2.96	2.99	3.03	3.05	3.08	3.09	3.04

C Range: 0 - 360DEG
C Interval: 15.0DEG
Test Speed: HIGH
Temperature:25.3DEG
Operators:ZR
Test Date:2021-08-18

γ Range: 0 - 180DEG
γ Interval: 1.0DEG
Test System:EVERFINE GO-2000B_V1 SYSTEM V2.0.354
Humidity:65.0%
Test Distance:8.402m [K=1.0000]
Remarks:

LUMINOUS DISTRIBUTION INTENSITY DATA

Test:U:48.00V I:0.1950A P:9.360W PF:1.000 Freq:50.00Hz Lamp Flux:807.518x1 lm		
NAME: M20-T43001A-9G40-120D	TYPE:	WEIGHT:
SPEC.:	DIM.:	SERIAL No.:
MFR.:	SUR.:100*116.4	Shielding Angle:

Table--2

UNIT: cd

C (DEG) γ (DEG)	285	300	315	330	345														
0	152	152	152	152	152														
5	157	156	155	154	153														
10	160	159	158	156	153														
15	163	162	159	156	153														
20	164	163	160	156	151														
25	165	164	160	155	149														
30	165	163	159	153	146														
35	164	162	157	150	142														
40	163	160	154	146	137														
45	160	157	150	141	131														
50	157	153	145	136	124														
55	153	148	139	129	116														
60	147	142	133	121	108														
65	141	135	125	113	99.2														
70	133	127	117	104	90.4														
75	124	118	108	95.5	81.7														
80	114	108	98.8	86.5	73.4														
85	104	97.7	89.4	77.6	65.7														
90	92.7	87.2	80.3	69.4	58.8														
95	81.9	76.9	71.7	62.1	52.8														
100	71.7	67.2	63.9	55.5	47.5														
105	62.5	58.6	57.0	49.9	42.9														
110	54.4	51.0	51.0	44.9	38.9														
115	47.7	44.6	45.7	40.5	34.7														
120	42.1	39.6	41.1	36.6	30.6														
125	37.4	35.2	37.0	33.0	26.8														
130	33.2	31.3	33.3	29.8	23.7														
135	29.5	27.9	30.0	26.8	21.0														
140	26.2	24.8	27.0	23.9	18.8														
145	23.2	21.9	24.2	21.3	16.8														
150	20.4	19.4	21.6	19.0	15.0														
155	18.0	17.1	19.2	16.8	13.1														
160	15.7	14.9	16.8	14.6	11.2														
165	13.7	12.7	14.2	12.0	9.23														
170	10.8	9.70	10.6	8.75	7.10														
175	4.32	4.13	4.50	4.49	3.99														
180	3.04	3.03	3.05	3.03	3.02														

C Range: 0 - 360DEG
C Interval: 15.0DEG
Test Speed: HIGH
Temperature:25.3DEG
Operators:ZR
Test Date:2021-08-18

γ Range: 0 - 180DEG
γ Interval: 1.0DEG
Test System:EVERFINE GO-2000B_V1 SYSTEM V2.0.354
Humidity:65.0%
Test Distance:8.402m [K=1.0000]
Remarks: